

Property Investment Proposal.

Pafília

PROPERTY INVESTMENT BEACHSIDE VILLAS

Development	Property	Plot m ²	Type	Beds	Baths	Total Covered Area m ²	Price	VAT
Beachside Villas	V4	469	Villa B	3	2	168.00	€719,400	Plus VAT

The project

An extraordinary development of 28 villas designed to harmonise and enhance the lifestyle of their enviable beachside location.



BEACHSIDE
VILLAS





BEACHSIDE LIVING

The energy and natural beauty of this protected area in Cyprus is undeniable and these carefully curated homes offer the same authenticity in a private, exclusive community.

Situated 12 minutes from the town of Polis and the stunning Akamas Peninsula, beside a long stretch of sandy beach and the glistening Mediterranean Sea, these villas are unique and completed with handcrafted materials and finishes to offer a refined, yet rustic simplicity.



PHASE 1

PHASE 2

Site plan



TYPE B

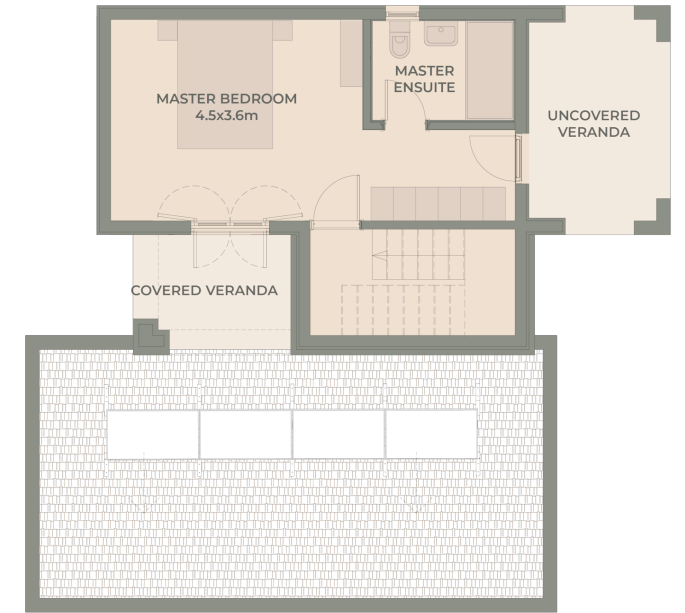
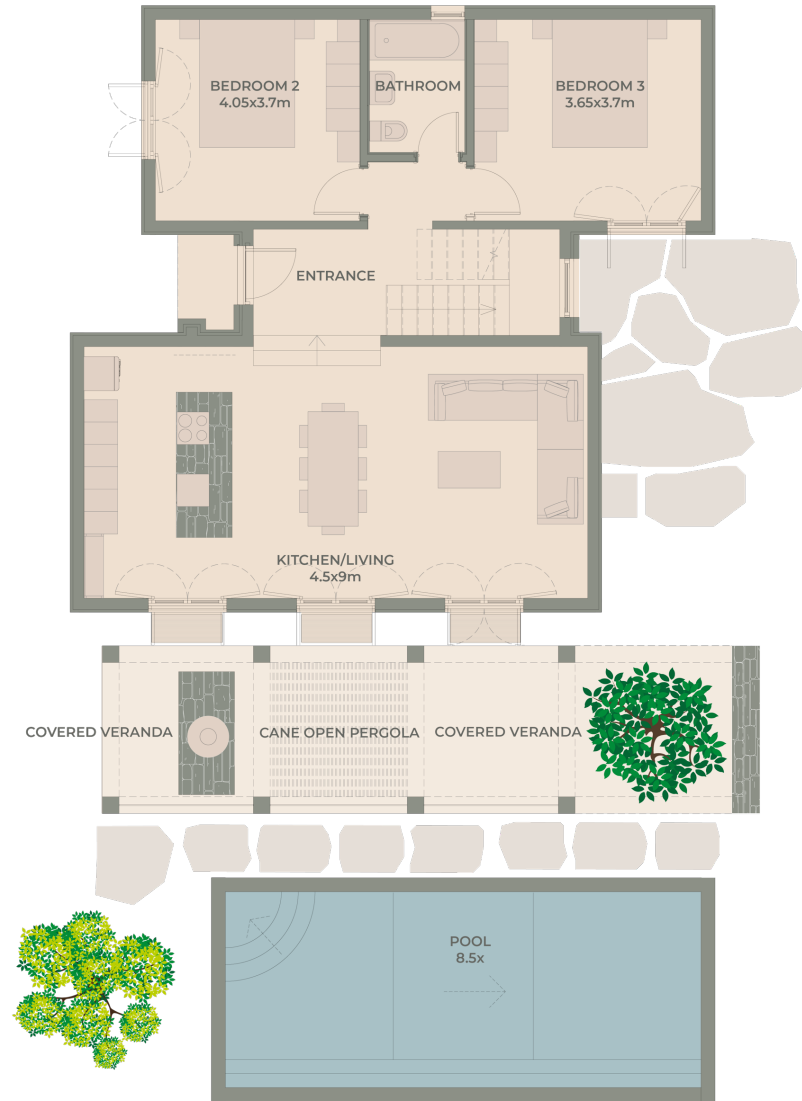
- 3 Bedrooms
- Main Bedroom On First Level
- Seamless Open-plan Living
- Outdoor Mediterranean Garden
- Optional Pool





TYPE B

This villa is characterized by a private and spacious master bedroom suite on an upper floor with its two private verandas. The ground floor there are two further bedrooms separated from the living volumes. The open plan kitchen and interior living space naturally flows to the outdoors which is softly shaded by natural materials that play with the light.







Sample bedroom



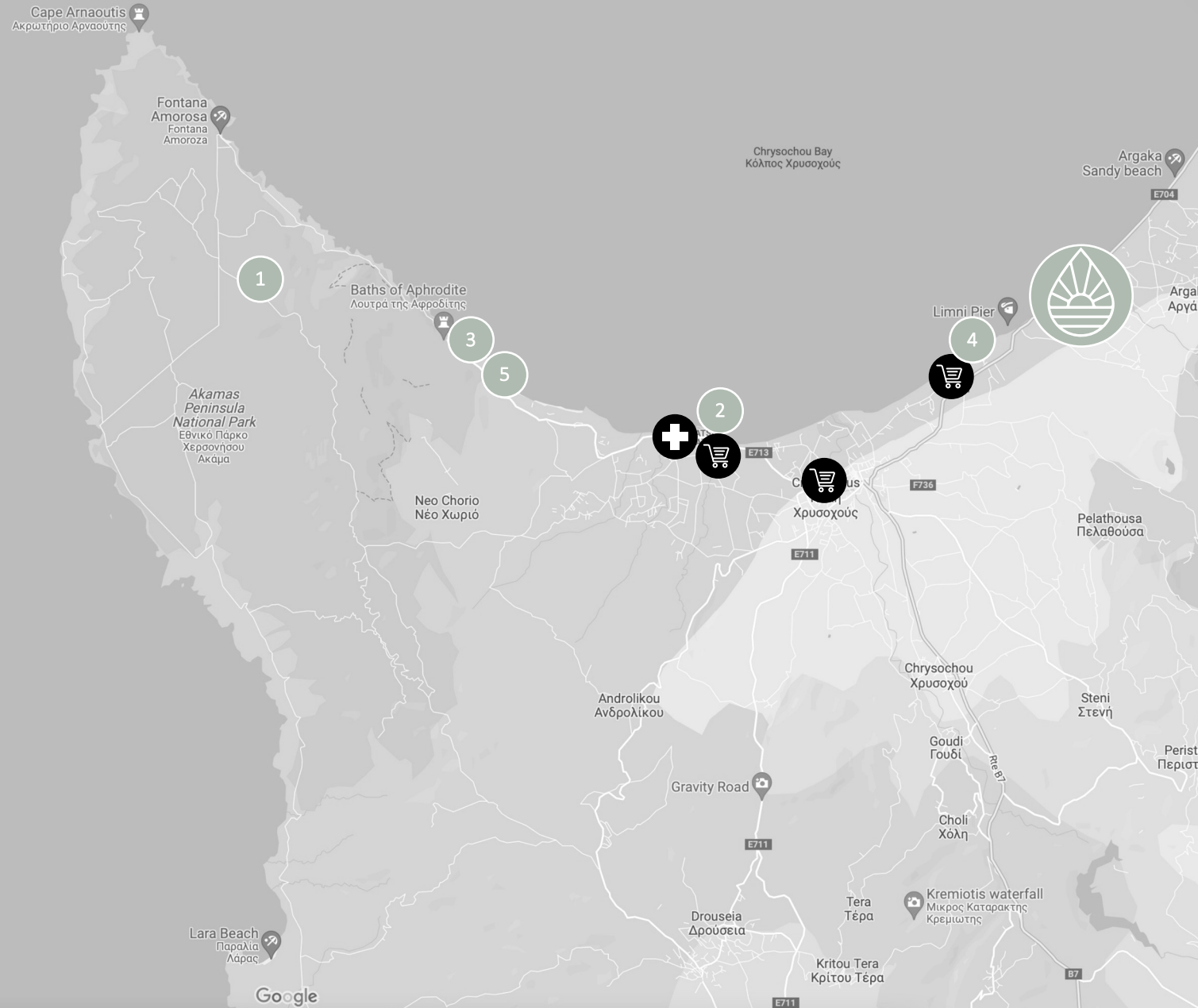
POLIS AREA MAP

PLACES OF INTEREST

1. Akamas Peninsula National Park
2. Latchi Harbour
3. Baths of Aphrodite
4. Limni Pier
5. Anassa Hotel

A GREAT LOCATION

- Town Center **12mins**
- Shopping **12mins**
- Hotels **12mins**
- Beach **1mins**
- Bank **12mins**
- Port **15mins**
- Pafos Town **45mins**
- Pafos airport **60mins**
- Larnaka airport **120mins**
- Troodos **110mins**
- Limassol **90mins**
- Nicosia **150mins**



Property Investment Proposal.

Pafilia

The contents and information contained in this presentation are intended for general marketing purposes only and must not be construed as advice, or being complete and accurate nor be relied upon as such. The photographs of the surrounding views and location may have been digitally enhanced or altered and do not represent actual views or surrounding views. These photographs are indicative only. Fittings and finishes are subject to availability and company's discretion. Prospective purchasers should make and must rely on their own enquiries. This presentation is a guide only and does not constitute an offer or contract. Neither the company nor any of its directors or employees give any representation or warranty as to the reliability of the information contained herein, and shall not be responsible and disclaim all loss, liability or expense of any nature whatsoever which may be attributable (directly, indirectly or consequentially) to the use of the information provided.